



CannaBusiness Laboratories, LLC

2554 Palumbo Dr. Lexington, KY 40509

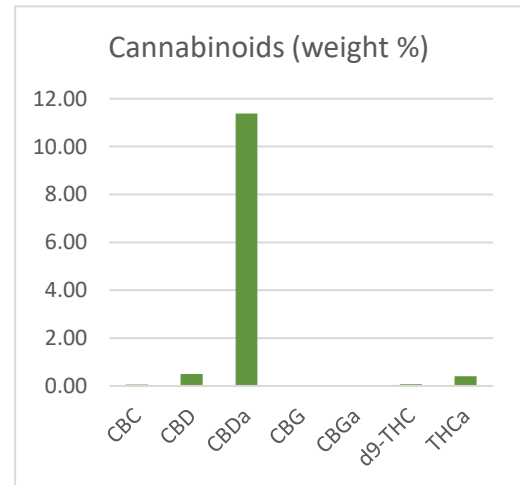
Certificate of Analysis

Customer: Pharm CBD
2580 Highway 42W
Bedford, KY 40006

Sample ID:
Genetic Variety: GO-1092019-01
Sample Type: Concentrate
Batch ID: Top
Collected Date:
Received Date: 10/14/2019
COA Released: 10/18/2019

CANNABINOID PROFILE

Analyte	Weight (%)	Concentration (mg/g)
CBC	0.06 %	0.58 mg/g
CBD	0.50 %	4.97 mg/g
CBDa	11.38 %	113.77 mg/g
CBDV	0.01 %	0.12 mg/g
CBG	0.01 %	0.11 mg/g
CBGa	ND %	ND mg/g
CBN	0.01 %	0.13 mg/g
d8-THC	ND %	ND mg/g
d9-THC	0.08 %	0.76 mg/g
THCa	0.40 %	4.01 mg/g
Total Cannabinoids	12.444 %	124.440 mg/g
Total Potential THC	0.43 %	4.27 mg/g
Total Potential CBD	10.47 %	104.75 mg/g



*Total Cannabinoids refers to the sum of all cannabinoids detected.

*Total Potential CBD = (0.8777 x CBDa) + CBD. *Total Potential THC = (0.8777 x THCa) + THC

*Total Potential THC/CBD are calculated to take into account the loss of an acid group during decarboxylation.

APPROVED BY

10/18/2019

DATE

This product has been tested by CannaBusiness Laboratories using validated testing methodologies. Values reported relate only to the product tested. CannaBusiness Laboratories makes no claims as to the efficacy, safety, or other risks associated with any detected or non-detected levels reported herein. This Certificate shall not be reproduced except in full, without the written permission of CannaBusiness Laboratories. Photo is of sample received by the lab and may vary from final packaging.



CannaBusiness Laboratories, LLC

2554 Palumbo Dr. Lexington, KY 40509

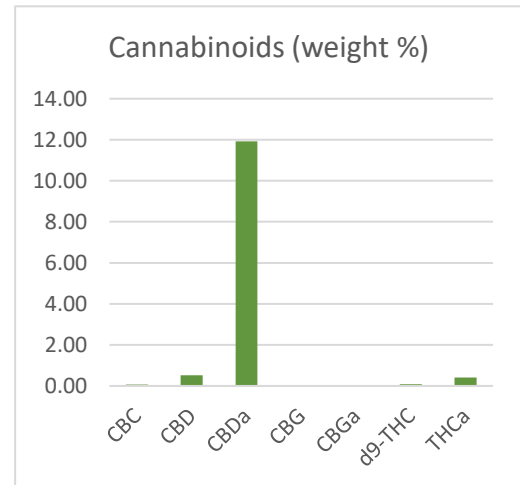
Certificate of Analysis

Customer: Pharm CBD
2580 Highway 42W
Bedford, KY 40006

Sample ID:
Genetic Variety: GO-1092019-02
Sample Type: Concentrate
Batch ID: Middle
Collected Date:
Received Date: 10/14/2019
COA Released: 10/18/2019

CANNABINOID PROFILE

Analyte	Weight (%)	Concentration (mg/g)
CBC	0.06 %	0.61 mg/g
CBD	0.52 %	5.18 mg/g
CBDa	11.93 %	119.26 mg/g
CBDV	0.02 %	0.17 mg/g
CBG	0.01 %	0.12 mg/g
CBGa	ND %	ND mg/g
CBN	ND %	ND mg/g
d8-THC	ND %	ND mg/g
d9-THC	0.08 %	0.84 mg/g
THCa	0.41 %	4.14 mg/g
Total Cannabinoids	13.032 %	130.321 mg/g
Total Potential THC	0.45 %	4.47 mg/g
Total Potential CBD	10.98 %	109.77 mg/g



*Total Cannabinoids refers to the sum of all cannabinoids detected.

*Total Potential CBD = (0.8777 x CBDa) + CBD. *Total Potential THC = (0.8777 x THCa) + THC

*Total Potential THC/CBD are calculated to take into account the loss of an acid group during decarboxylation.

APPROVED BY

10/18/2019

DATE

This product has been tested by CannaBusiness Laboratories using validated testing methodologies. Values reported relate only to the product tested. CannaBusiness Laboratories makes no claims as to the efficacy, safety, or other risks associated with any detected or non-detected levels reported herein. This Certificate shall not be reproduced except in full, without the written permission of CannaBusiness Laboratories. Photo is of sample received by the lab and may vary from final packaging.



CannaBusiness Laboratories, LLC

2554 Palumbo Dr. Lexington, KY 40509

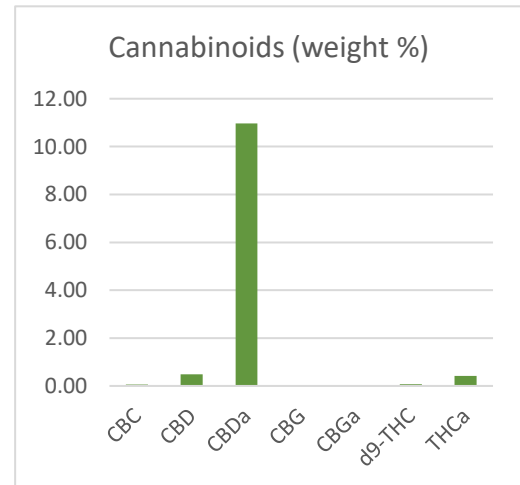
Certificate of Analysis

Customer: Pharm CBD
2580 Highway 42W
Bedford, KY 40006

Sample ID:
Genetic Variety: GO-1092019-03
Sample Type: Concentrate
Batch ID: Bottom
Collected Date:
Received Date: 10/14/2019
COA Released: 10/18/2019

CANNABINOID PROFILE

Analyte	Weight (%)	Concentration (mg/g)
CBC	0.06 %	0.56 mg/g
CBD	0.48 %	4.81 mg/g
CBDa	10.97 %	109.66 mg/g
CBDV	0.01 %	0.11 mg/g
CBG	0.01 %	0.11 mg/g
CBGa	ND %	ND mg/g
CBN	ND %	ND mg/g
d8-THC	ND %	ND mg/g
d9-THC	0.08 %	0.78 mg/g
THCa	0.42 %	4.16 mg/g
Total Cannabinoids	12.018 %	120.179 mg/g
Total Potential THC	0.44 %	4.42 mg/g
Total Potential CBD	10.10 %	100.98 mg/g



*Total Cannabinoids refers to the sum of all cannabinoids detected.

*Total Potential CBD = (0.8777 x CBDa) + CBD. *Total Potential THC = (0.8777 x THCa) + THC

*Total Potential THC/CBD are calculated to take into account the loss of an acid group during decarboxylation.

APPROVED BY

10/18/2019

DATE

This product has been tested by CannaBusiness Laboratories using validated testing methodologies. Values reported relate only to the product tested. CannaBusiness Laboratories makes no claims as to the efficacy, safety, or other risks associated with any detected or non-detected levels reported herein. This Certificate shall not be reproduced except in full, without the written permission of CannaBusiness Laboratories. Photo is of sample received by the lab and may vary from final packaging.



CannaBusiness Laboratories, LLC

2554 Palumbo Dr. Lexington, KY 40509

Certificate of Analysis

Customer: Pharm CBD

Sample ID:

Genetic Variety: G0-1092019-01

Sample Type: Hemp Flower

Batch ID:

Collected Date:

Received Date: 10/14/2019

COA Released: 10/21/2019

HEAVY METALS ANALYSIS

Analyte	Result	(ppm)
Arsenic	< 1.500	ppm
Cadmium	< 0.500	ppm
Lead	< 0.500	ppm
Mercury	< 3.000	ppm

APPROVED BY

10/21/2019

DATE

This product has been tested by CannaBusiness Laboratories using validated testing methodologies. Values reported relate only to the product tested. CannaBusiness Laboratories makes no claims as to the efficacy, safety, or other risks associated with any detected or non-detected levels reported herein. This Certificate shall not be reproduced except in full, without the written permission of CannaBusiness Laboratories. Photo is of sample received by the lab and may vary from final packaging.



CannaBusiness Laboratories, LLC

2554 Palumbo Dr. Lexington, KY 40509

Certificate of Analysis

Customer: Pharm CBD

Sample ID:
Genetic Variety: G0-1092019-01
Sample Type: Hemp Flower
Batch ID: Top
Collected Date:
Received Date: 10/14/2019
COA Released: 10/17/2019

Terpenes

ANALYTE	LOQ wt%	Result wt%
alpha-Pinene	0.01	0.02
Camphene	0.01	<0.01
beta-Myrcene	0.01	0.03
beta-Pinene	0.01	0.01
delta-3-carene	0.01	<0.01
alpha-Terpinene	0.01	<0.01
trans-beta-Ocimene	0.01	<0.01
d-Limonene	0.01	<0.01
p-Isopropyltoluene (p-Cymene)	0.01	<0.01
Ocimene (mixture of isomers)	0.01	<0.01
Eucalyptol	0.01	<0.01
gamma-Terpinene	0.01	<0.01
Terpinolene	0.01	<0.01
Linalool	0.01	0.01
Isopulegol	0.01	<0.01
Geraniol	0.01	<0.01
beta-Caryophyllene	0.01	0.20
alpha-Humulene	0.01	0.05
cis-Nerolidol	0.01	<0.01
trans-Nerolidol	0.01	0.01
Guaiol	0.01	0.03
alpha-Bisabolol	0.01	0.03

APPROVED BY

10/17/2019

DATE

This product has been tested by CannaBusiness Laboratories using validated testing methodologies. Values reported relate only to the product tested. CannaBusiness Laboratories makes no claims as to the efficacy, safety, or other risks associated with any detected or non-detected levels reported herein. This Certificate shall not be reproduced except in full, without the written permission of CannaBusiness Laboratories. Photo is of sample received by the lab and may vary from final packaging.



CannaBusiness Laboratories, LLC

2554 Palumbo Dr. Lexington, KY 40509

Certificate of Analysis

Customer:
Pharm CBD

Sample ID:
Genetic Variety: GO-1092019-01 TOP
Sample Type: Hemp Flower
Received Date: 10/14/2019
COA Released: 10/18/2019

MICROBIALS

Parameter	Result
STEC (E. coli)	Negative
Salmonella	Negative

WATER ACTIVITY

Temperature	Result
25.03	0.4

MOISTURE

Moisture %	13.1
------------	------

10/18/2019

APPROVED BY

DATE

This product has been tested by CannaBusiness Laboratories using validated testing methodologies. Values reported relate only to the product tested. CannaBusiness Laboratories makes no claims as to the efficacy, safety, or other risks associated with any detected or non-detected levels reported herein. This Certificate is reproduced except in full, without the written permission of CannaBusiness Laboratories. Photo is of sample received by the lab and may vary from final product. Results apply to the sample as received.

*maBusiness
shall not be
ackaging. The*



CannaBusiness Laboratories, LLC

2554 Palumbo Dr. Lexington, KY 40509

Certificate of Analysis

Customer: Pharm CBD

Sample ID:
Genetic Variety: G0-1092019-01
Sample Type: Hemp Flower
Batch ID: Top
Collected Date:
Received Date: 10/14/2019
COA Released: 10/18/2019

PESTICIDES & MYCOTOXINS

ANALYTE	LOQ ppm	Result ppm	ANALYTE	LOQ ppm	Result ppm	ANALYTE	LOQ ppm	Result ppm
Daminozide	0.01	ND	Naled	0.01	ND	Propiconazole	0.01	ND
Acephate	0.01	ND	Metalaxyl	0.01	ND	Clofentezine	0.01	ND
Oxamyl	0.01	ND	Chloantraniliprole	0.01	ND	Trifloxystrobin	0.01	ND
Methomyl	0.01	ND	Spiroxamine-1	0.01	ND	Prallethrin	0.01	ND
Thiamethoxam	0.01	ND	Azoxystrobin	0.01	ND	Piperonyl Butoxide	0.01	ND
Imidacloprid	0.01	ND	Phosmet	0.01	ND	Chlorpyrifos	0.01	ND
Dimethoate	0.01	ND	Methiocarb	0.01	ND	Hexythiazox	0.01	ND
Acetamiprid	0.01	ND	Malathion	0.01	ND	Etoxazole	0.01	ND
Thiacloprid	0.01	ND	Myclobutanil	0.01	ND	Spiromefesin	0.01	ND
Aflatoxin-G2	0.01	ND	Ochratoxin-M+H	0.01	ND	Pyrethrin I	0.01	ND
Aldicarb	0.05	ND	Paclobutrazol	0.01	ND	Fenpyroximate	0.01	ND
Aflatoxin-G1	0.01	ND	Bifenazate	0.01	ND	Pyridaben	0.01	ND
Aflatoxin-B2	0.01	ND	Spirotetramat	0.01	ND	Permethrins	0.01	ND
Dichlorvos	0.01	ND	Fenoxycarb	0.01	ND	AbamectinB1a	0.05	ND
Aflatoxin-B1	0.01	ND	Ethoprophos	0.01	ND	Etofenprox	0.01	ND
Carbofuran	0.01	ND	Tebuconazole	0.01	ND	Bifenthrin	0.01	ND
Propoxur	0.01	ND	Kresoxym-methyl	0.01	ND	Fonicamid	0.01	ND
Carbaryl	0.01	ND	Spinosyn A	0.01	ND	Fludioxonil	0.01	ND
Imazalil	0.01	ND	Diazinon	0.01	ND			

APPROVED BY

10/18/2019

DATE

This product has been tested by CannaBusiness Laboratories using validated testing methodologies. Values reported relate only to the product tested. CannaBusiness Laboratories makes no claims as to the efficacy, safety, or other risks associated with any detected or non-detected levels reported herein. This Certificate shall not be reproduced except in full, without the written permission of CannaBusiness Laboratories. Photo is of sample received by the lab and may vary from final packaging.